



# oberfields

PAVERS | WALLS | OUTDOOR LIVING



[oberfields.com](https://www.oberfields.com)

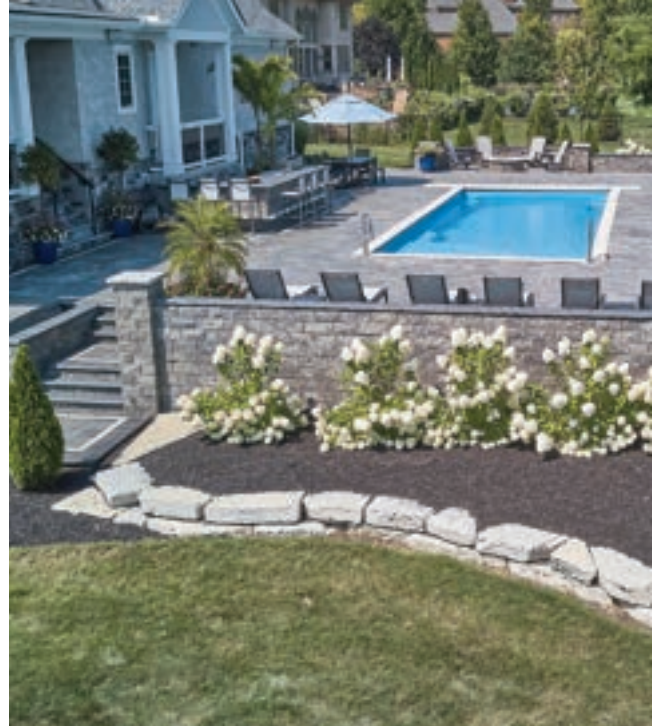


# Why Choose Oberfields?



## AMERICAN - MADE WORLD - CLASS MANUFACTURING

Oberfields is proud to be American-Owned and Made. We manufacture our products within our three manufacturing facilities in central Ohio, and employ nearly one hundred employees.



## THE DURA-DENZ DIFFERENCE

Dura Denz is exclusive to Oberfields and represents a dramatic break-through in concrete casting technology. Our Americana Collection line of premium pavers are infused with Dura Denz. A specially formulated dense top layer that creates a smooth, extra-hard surface that resists chipping, scratching and fading. The result is products that are not only beautiful, but extremely durable



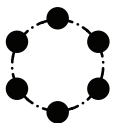
## NETWORK OF DEALERS & AUTHORIZED CONTRACTORS

You can find our products throughout the Midwest and down the East Coast. We have a valued distributor network who are knowledgeable about our products and have our products on display. We take great pride in providing in-depth regional training programs for contractors to become Authorized Oberfields Contractors. To connect with a distributor or authorized contractor in your area, please visit [oberfields.com](http://oberfields.com)



## EXPERIENCED PROFESSIONAL ADVICE

We are more than your supplier, we are your partner. We recognize the importance of sales support and inventory. We have a phenomenal team that's trained to be your resource. Our knowledgeable staff provides expertise from site design and installation techniques, to delivery.



## ONE-SOURCE ORDERING

Pavers. Retaining Walls. Step Units. Structures. Sealers and Cleaners. We've got you covered with one call.

Standard concrete pavers are coarse with visible aggregate on surface. They are manufactured to exceed all ASTM standards for quality and strength.

Dura Denz Technology provides an exceptional paver with color infused throughout and a top layer that's colorfast and resilient to wear and tear. ASTM compliant.



# Contents



## INSPIRATION

Find your Contractor/Dealer ..... 4-5

## PAVERS

Lexington® ..... 8-9  
 Ozark® Demi..... 10-11  
 Ozark® Supra..... 12-13  
 Manhattan® Demi ..... 14-15  
 Manhattan® Supra ..... 16-17  
 Newport® ..... 18-19  
 CityStone™ XL ..... 20-21  
 Plymouth® ..... 22-23  
 Jamestown® ..... 24-25  
 Luna™ ..... 26-27  
 Grand Flagstone ..... 28  
 Dimensional Flagstone ..... 29

## WALLS

Edington Wall Stone® ..... 32-33  
 Lenza Wall ..... 34-35  
 Belvedere Wall ..... 36-37  
 Dimensional Wall..... 38-39  
 Kodah Wall..... 40-41  
 Outcropping..... 42-43  
 Versa-Lok® ..... 44-45  
 RegalStone Pro® Straight ..... 46-47  
 MagnumStone® ..... 48-49

## STAIR TREADS | WALL COPINGS | COLUMN CAPS

Bullnose Pavers..... 52-53  
 Olentangy Bluff Tread™ ..... 54-55  
 Dimensional and Irregular Steps ..... 56-57  
 Superior Steppers ..... 58-59  
 Dimensional Coping..... 60-61  
 Column Caps..... 62-63

## SAND | SEALERS | KITS

Dura Denz Sand and Sealers..... 64-65  
 Fire Pits ..... 66-71

## GENERAL INFORMATION

Structures ..... 72  
 Paver Patterns ..... 73  
 Packaging Reference Guide..... 74-79  
 Warranty ..... 83



# Find your authorized contractor & dealer today



Simply open the camera app on your phone and scan the code to get in touch with our contractors/dealers.

Our goal is to provide you with quality paver & wall products for your project. We understand that it's a large investment. If you need help with finding the right contractor for your project, we can help. Our goal is to recommend qualified, knowledgeable, certified hardscape contractors. The hardscape contractors found on our Oberfields Authorized Contractor list have shown a proven knowledge on the basics of paver and retaining wall construction and installation. Each company listed has at least one individual on staff that has attended our two-day training course and passed our Certification Exam.

While we try our best to recommend qualified contractors for your project, Oberfields does not guarantee the workmanship of the installer. Please ask your selected contractor for references and about any warranty or guarantees they might provide on workmanship.

## FOLLOW THESE STEPS TO SELECT THE IDEAL CONTRACTOR TO BRING YOUR PROJECT TO LIFE.

### STEP ONE

It's always a good idea to interview several contractors and find the best match for your project and personality. The contractor you choose will be at your project for days or weeks. Talk about working hours, how many people to expect at the project, what kind of equipment they will be using. Make sure you have a good rapport with the person and communicate your wants and needs.

### STEP THREE

Once you reward the project to a specific contractor, get a written contract of the work to be performed. Make sure you understand the scope of your project and that any changes midway through the project, could result in additional costs to the project.

### STEP TWO

Once you decide on the work you want to complete, confirm that the contractor has done that type of work in the past. Ask for pictures, references, or go by other projects they have completed and make sure you are happy with their quality of work.

**Make sure to ask if they are an Oberfields Authorized Contractor.**

### STEP FOUR

Once your project is complete, we would love to see finished photos! Photos can be submitted to Oberfields at [photos@oberfields.com](mailto:photos@oberfields.com). Photos may be used in social media or future catalog publications.



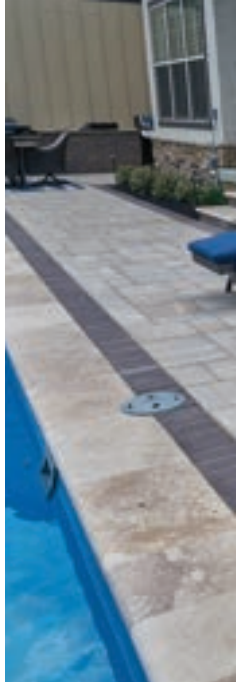
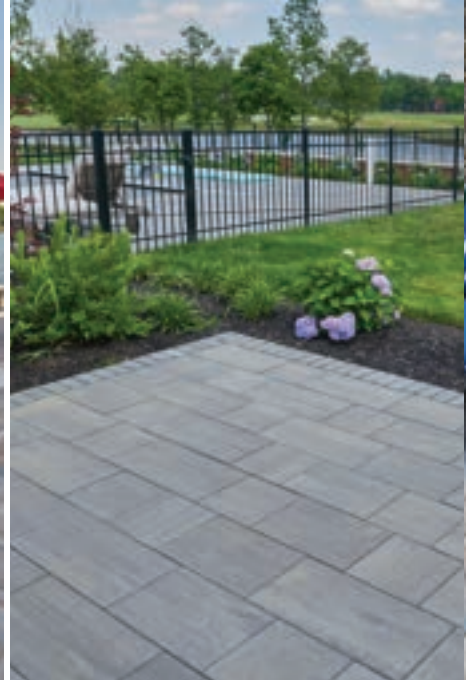


# Utilize our network of authorized contractors and dealers to build your happy place

We have a valued distributor network throughout the Midwest who are knowledgeable about our products and have our products on display. We take great pride in providing in-depth regional training programs for contractors to become Authorized Oberfields Contractors.

[Learn more at Oberfields.com](https://www.oberfields.com)









# Lasting memories happen here

LEXINGTON®

OZARK® DEMI

OZARK® SUPRA

MANHATTAN® DEMI

MANHATTAN® SUPRA

NEWPORT®

CITYSTONE™ XL

PLYMOUTH®

JAMESTOWN®

LUNA™

AMERICANA COLLECTION®

GRAND FLAGSTONE

DIMENSIONAL FLAGSTONE





● Storm Blend | Sealed



Due to variations in printing, color selections should always be chosen from actual product samples.  
Americana Collection pavers require a buffer between the plate compactor and the paver surface to prevent scuffing.



# Lexington<sup>®</sup>



Packaged Together New Combo Mold (Muster K Pattern)



**Lexington 14**

5 1/2" x 5 1/2" x 2 3/8"



**Lexington 21**

5 1/2" x 8 1/4" x 2 3/8"



Canyon Creek Blend



Charcoal  
(Lexington 21 only)



Driftwood Blend



Earth Blend



Flagstone Blend



Granite Blend



Storm Blend

**Lexington 21 Sold Separately  
in Charcoal, Driftwood and Storm Only**



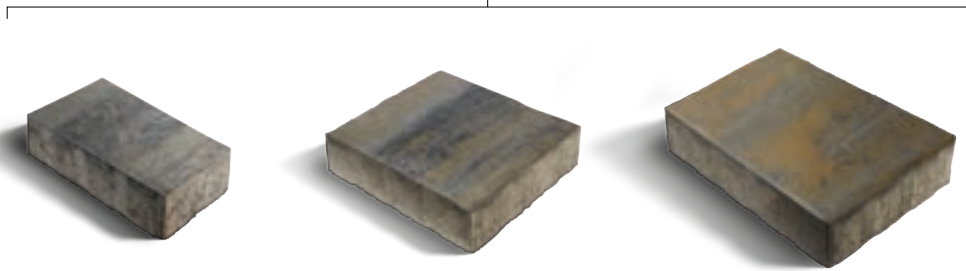






# Ozark<sup>®</sup> Demi

Packaged Together



**Small Rectangle**  
4" x 8" x 2<sup>3</sup>/<sub>8</sub>"

**Square**  
8" x 8" x 2<sup>3</sup>/<sub>8</sub>"

**Large Rectangle**  
8" x 12" x 2<sup>3</sup>/<sub>8</sub>"



Canyon Creek Blend



Driftwood Blend



Earth Blend



Flagstone Blend



Granite Blend



Storm Blend

\*Similar to our previous Malibu





● Flagstone Blend | Sealed



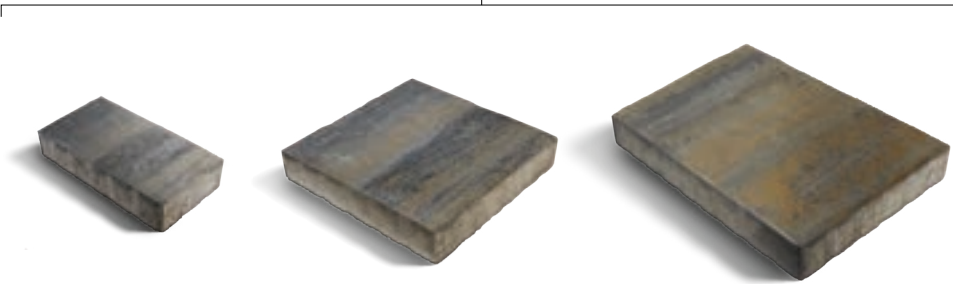
Due to variations in printing, color selections should always be chosen from actual product samples. Americana Collection pavers require a buffer between the plate compactor and the paver surface to prevent scuffing.





# Ozark<sup>®</sup> Supra

Packaged Together



**Small Rectangle**  
8" x 16" x 2 <sup>3</sup>/<sub>8</sub>"

**Square**  
16" x 16" x 2 <sup>3</sup>/<sub>8</sub>"

**Large Rectangle**  
16" x 24" x 2 <sup>3</sup>/<sub>8</sub>"



Driftwood Blend



Earth Blend



Flagstone Blend



Granite Blend



Storm Blend



● Earth Blend Sealed



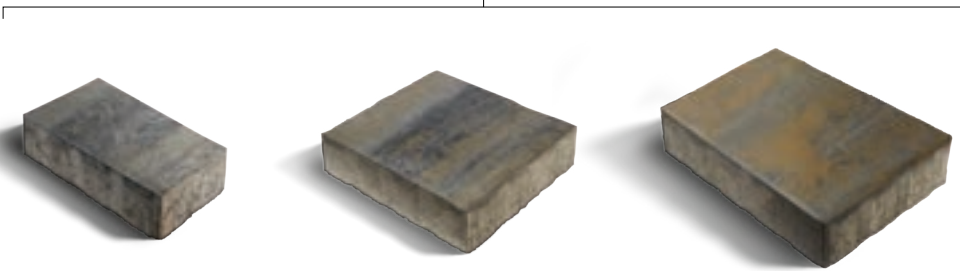
Due to variations in printing, color selections should always be chosen from actual product samples.  
Americana Collection pavers require a buffer between the plate compactor and the paver surface to prevent scuffing.





# Manhattan<sup>®</sup> Demi

Packaged Together



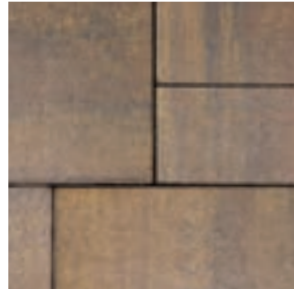
**Small Rectangle**  
4" x 8" x 2<sup>3</sup>/<sub>8</sub>"

**Square**  
8" x 8" x 2<sup>3</sup>/<sub>8</sub>"

**Large Rectangle**  
8" x 12" x 2<sup>3</sup>/<sub>8</sub>"



Driftwood Blend



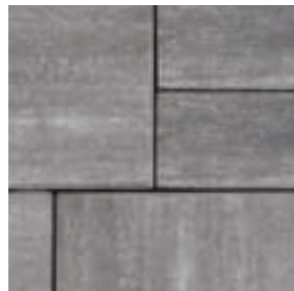
Earth Blend



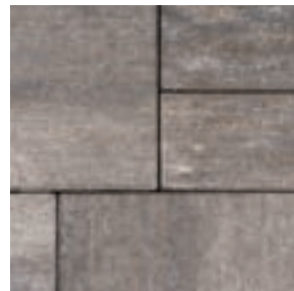
Flagstone Blend



Frost Blend



Granite Blend



Storm Blend

\*New for 2024! Similar to Ozark Demi but a smooth surface



● Flagstone Blend



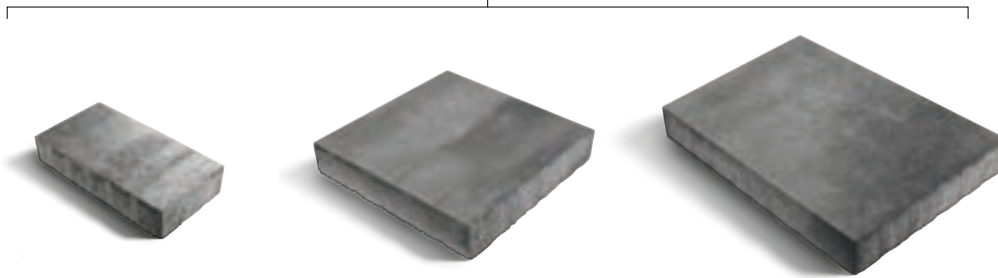
Due to variations in printing, color selections should always be chosen from actual product samples. Americana Collection pavers require a buffer between the plate compactor and the paver surface to prevent scuffing.





# Manhattan<sup>®</sup> Supra

Packaged Together



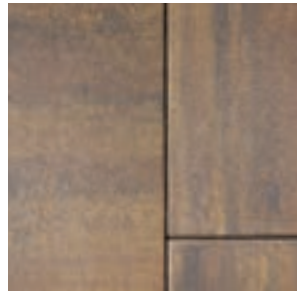
**Small Rectangle**  
8" x 16" x 2 <sup>3</sup>/<sub>8</sub>"

**Square**  
16" x 16" x 2 <sup>3</sup>/<sub>8</sub>"

**Large Rectangle**  
16" x 24" x 2 <sup>3</sup>/<sub>8</sub>"



Driftwood Blend



Earth Blend



Flagstone Blend



Frost Blend



Granite Blend



Storm Blend

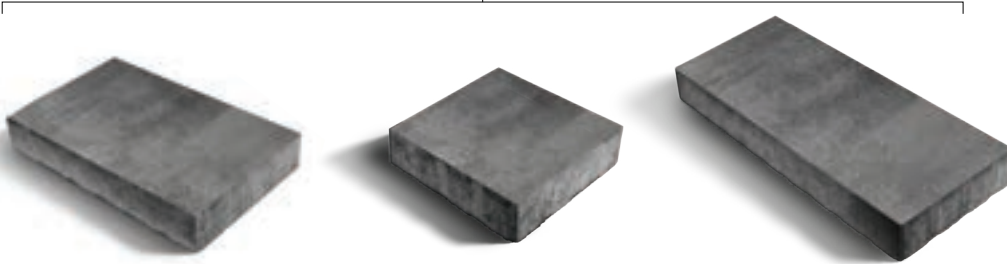




# Newport<sup>®</sup>



Packaged Together



**Small Rectangle**  
 $11 \frac{3}{4}'' \times 17 \frac{3}{4}'' \times 2 \frac{3}{8}''$

**Square**  
 $11 \frac{3}{4}'' \times 11 \frac{3}{4}'' \times 2 \frac{3}{8}''$

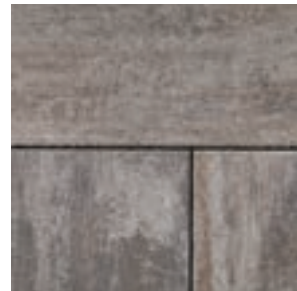
**Large Rectangle**  
 $11 \frac{3}{4}'' \times 23 \frac{5}{8}'' \times 2 \frac{3}{8}''$



Driftwood Blend



Granite Blend



Storm Blend



Due to variations in printing, color selections should always be chosen from actual product samples.  
Americana Collection pavers require a buffer between the plate compactor and the paver surface to prevent scuffing.





# CityStone™ XL



**CityStone™**  
12" x 24" x 2 1/2"



**CityStone™**  
24" x 24" x 2 1/2"



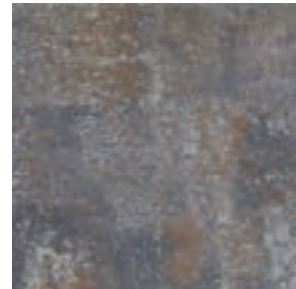
Driftwood Blend



Frost Blend



Silver Mist Blend



Storm Blend





● Charcoal & Cream | Sealed



Due to variations in printing, color selections should always be chosen from actual product samples.  
Americana Collection pavers require a buffer between the plate compactor and the paver surface to prevent scuffing.



# Plymouth<sup>®</sup>



**Plymouth**  
4" x 8" x 2 3/8"



**Plymouth**  
4" x 8" x 3 1/8"  
(Special Order)



**Plymouth False Joint**  
4" x 8" x 3 1/8"  
(Special Order)



Charcoal



Cream



Dark Chocolate



Khaki



Silver Mist



Due to variations in printing, color selections should always be chosen from actual product samples. Americana Collection pavers require a buffer between the plate compactor and the paver surface to prevent scuffing.



# Jamestown<sup>®</sup>



**Jamestown**  
2 <sup>5</sup>/<sub>8</sub>" x 7 <sup>7</sup>/<sub>8</sub>" x 2 <sup>3</sup>/<sub>8</sub>"



Charcoal



Cream



Salt & Pepper



Silver Mist



● Charcoal (Sealed) and Frost



Due to variations in printing, color selections should always be chosen from actual product samples.  
Americana Collection pavers require a buffer between the plate compactor and the paver surface to prevent scuffing.

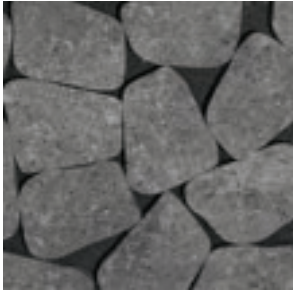


# Luna™

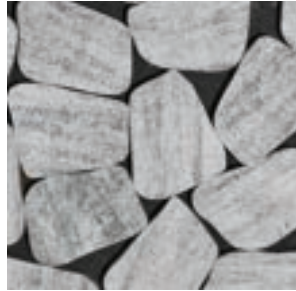
---



**Luna**  
4 1/3" x 6" x 2 1/2"



Charcoal



Frost





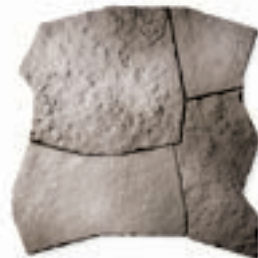
# Grand Flagstone\*



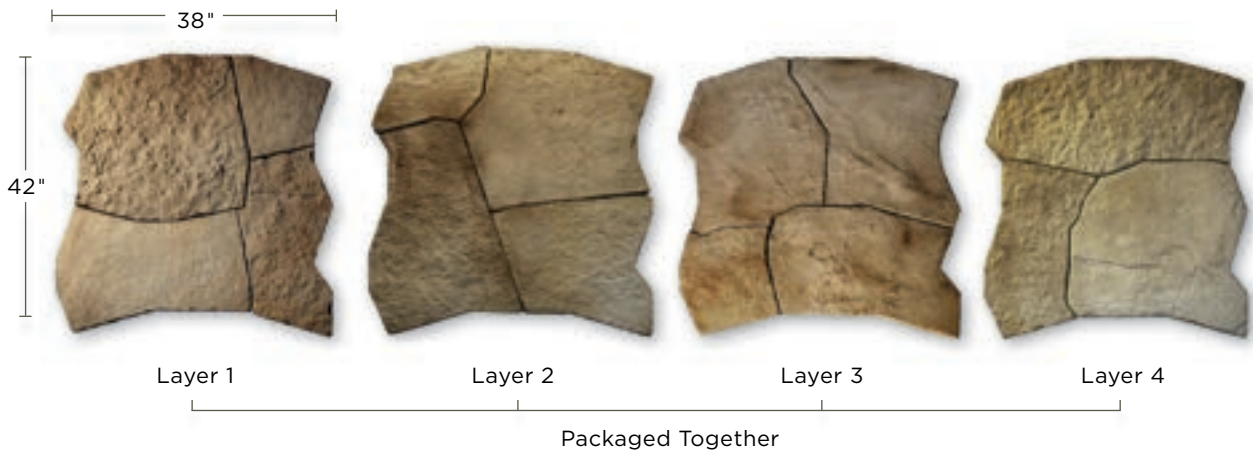
Cuyahoga Blend  
**(Special Product Only)**



Mohican Blend  
**(Special Product Only)**



Scioto Blend  
**(Special Product Only)**







# Dimensional Flagstone\*

PAVERS

GRAND FLAGSTONE\*

DIMENSIONAL FLAGSTONE\*



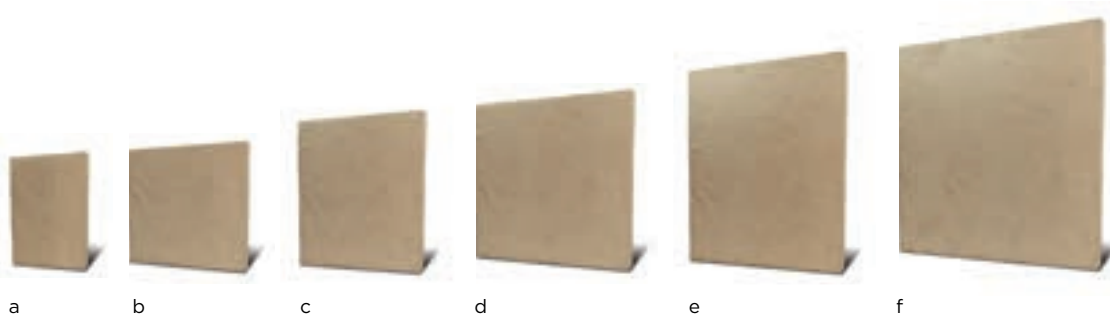
Cuyahoga Blend  
**(Special Product Only)**



Mohican Blend  
**(Special Product Only)**



Scioto Blend  
**(Special Product Only)**



a

b

c

d

e

f

Packaged Together

- a) **Dimensional Flagstone\*** - 6" x 12" x 2"
- b) **Dimensional Flagstone\*** - 12" x 12" x 2"
- c) **Dimensional Flagstone\*** - 12" x 18" x 2"

- d) **Dimensional Flagstone\*** - 18" x 18" x 2"
- e) **Dimensional Flagstone\*** - 18" x 24" x 2"
- f) **Dimensional Flagstone\*** - 24" x 24" x 2"



Due to variations in printing, color selections should always be chosen from actual product samples.



\* Not Available in Michigan.









# Inspiring Spaces



EDINGTON WALL STONE®

LENZA WALL

BELVEDERE WALL

DIMENSIONAL WALL

KODAH WALL

OUTCROPPING WALL

VERSA-LOK®

REGALSTONE PRO®

MAGNUMSTONE®







# Edington Wall Stone®



**Edington Wall Stone®**  
12" x 8" x 4"



**Edington Wall Stone® Wedge**  
12" x 8" x 4"



**Non-Tumbled Edington Wall Stone®**  
12" x 8" x 4"



**Non-Tumbled Edington Wall Stone® Wedge**  
12" x 8" x 4"

### Tumbled



Canyon Creek Blend



Charcoal



Driftwood Blend



Earth Blend



Flagstone Blend



Granite Blend



Silver Mist Blend



Storm Blend

### Non-Tumbled



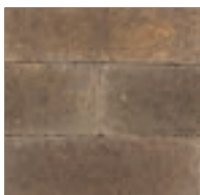
Canyon Creek Blend



Charcoal



Driftwood Blend



Earth Blend



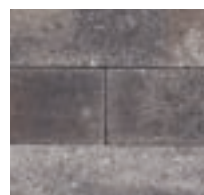
Flagstone Blend



Granite Blend



Silver Mist Blend



Storm Blend



EDINGTON® FIRE PIT







# Lenza Wall



**Wall Block**  
18" x 9" x 5"



**Wall Cap**  
18.5" x 10" x 2.5"



Driftwood Blend



Granite Blend



Storm Blend



LENZA FIRE PIT



● Cuyahoga Blend | Sealed





# Belvedere Wall\*



**Belvedere® Wall, Corner and Coping**

Wall blocks come in different sizes to create a double sided wall

Belvedere also available in corners and copings.



Cuyahoga Blend  
**(Special Order Only)**



Mohican Blend



Scioto Blend



BELVEDERE FIRE PIT





# Dimensional Wall\*



**Dimensional Wall Straight Block\***  
12" x 8" x 4"



**Dimensional Wall Wedge Block\***  
12" x 8" x 4"



Cuyahoga Blend  
**(Special Order Only)**



Mohican Blend



Scioto Blend



DIMENSIONAL FIRE PIT







# Kodah Wall\*



**Kodah Wall**  
12" x 10.5" x 6"



**Kodah Wall**  
21" x 10.5" x 6"



**Kodah Wall**  
30" x 10.5" x 6"



**Kodah Wall**  
42" x 10.5" x 6"



**Kodah Wall Corner**  
21" x 10.5" x 6"

Packaged Together



**Cuyahoga Blend**  
(Special Order Only)



**Mohican Blend**



**Scioto Blend**



● Cuyahoga Blend





# Outcropping Wall\*



### Outcropping Wall Stone\*

12" H x 42" L  
(unit shown is one of a 12 piece modular system)



### Outcropping Wall Stone Corner

**Available in 6"**  
6" H x 39" L x 27" D  
12" H x 39" L x 27" D



### Outcropping Wall Stone\*

18" H x 60" L x 18" D  
(unit shown is one of a 12 piece modular system)

**Outcropping Wall Stone Corner 6"** - 6" H x 39" L x 27" D

**Outcropping Wall Stone Corner 12"** - 12" H x 48" L x 30" D



Cuyahoga Blend  
**(Special Order Only)**



Mohican Blend



Scioto Blend





# Versa-Lok®



**Standard**  
16" (face) x 14" (rear) x 12" D x 6" H



**Smooth Top**  
16" (face) x 14" (rear) x 12" D x 6" H



**Rectangular Cap**  
16" (face) x 11<sup>5</sup>/<sub>8</sub>" D x 3<sup>5</sup>/<sub>8</sub>" H



**Solid Corner**  
7<sup>7</sup>/<sub>8</sub>" (face) x 12" D x 6" H



**Full Return Corner**  
16" (face) x 7<sup>7</sup>/<sub>8</sub>" D x 6" H



**Weathered Standard**  
16" (face) x 14" (rear) x 12" D x 6" H  
**(Special Order Only - 1 Pallet Minimum)**



**Solid Corner Unit Weathered**  
7<sup>7</sup>/<sub>8</sub>" (face) x 12" D x 6" H  
**(Special Order Only - 1 Pallet Minimum)**



**Full Return Corner Weathered**  
16" (face) x 7<sup>7</sup>/<sub>8</sub>" D x 6" H  
**(Special Order Only - 1 Pallet Minimum)**



**Rectangular Cap Weathered**  
16" (face) x 11<sup>5</sup>/<sub>8</sub>" D x 3<sup>5</sup>/<sub>8</sub>" H  
**(Special Order Only - 1 Pallet Minimum)**



**Charcoal**  
Rectangular Cap Only



Canyon Creek Blend



Chestnut Blend



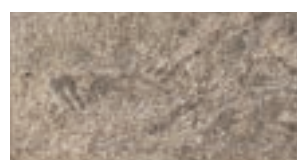
Desert Sand



Earth Blend



Flagstone Blend



Granite Blend



Storm Blend





# RegalStone Pro® Straight



**RegalStone Pro®**  
18" (face) x 12" D x 8" H



**Square Foot Corner**  
18" (face) x 8" D x 8" H



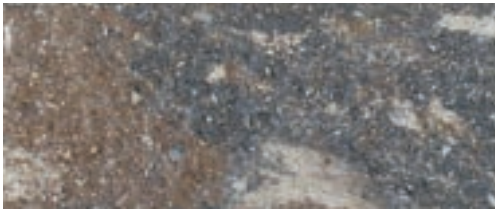
**Square Foot Cap**  
18" (face) x 12" D x 4" H



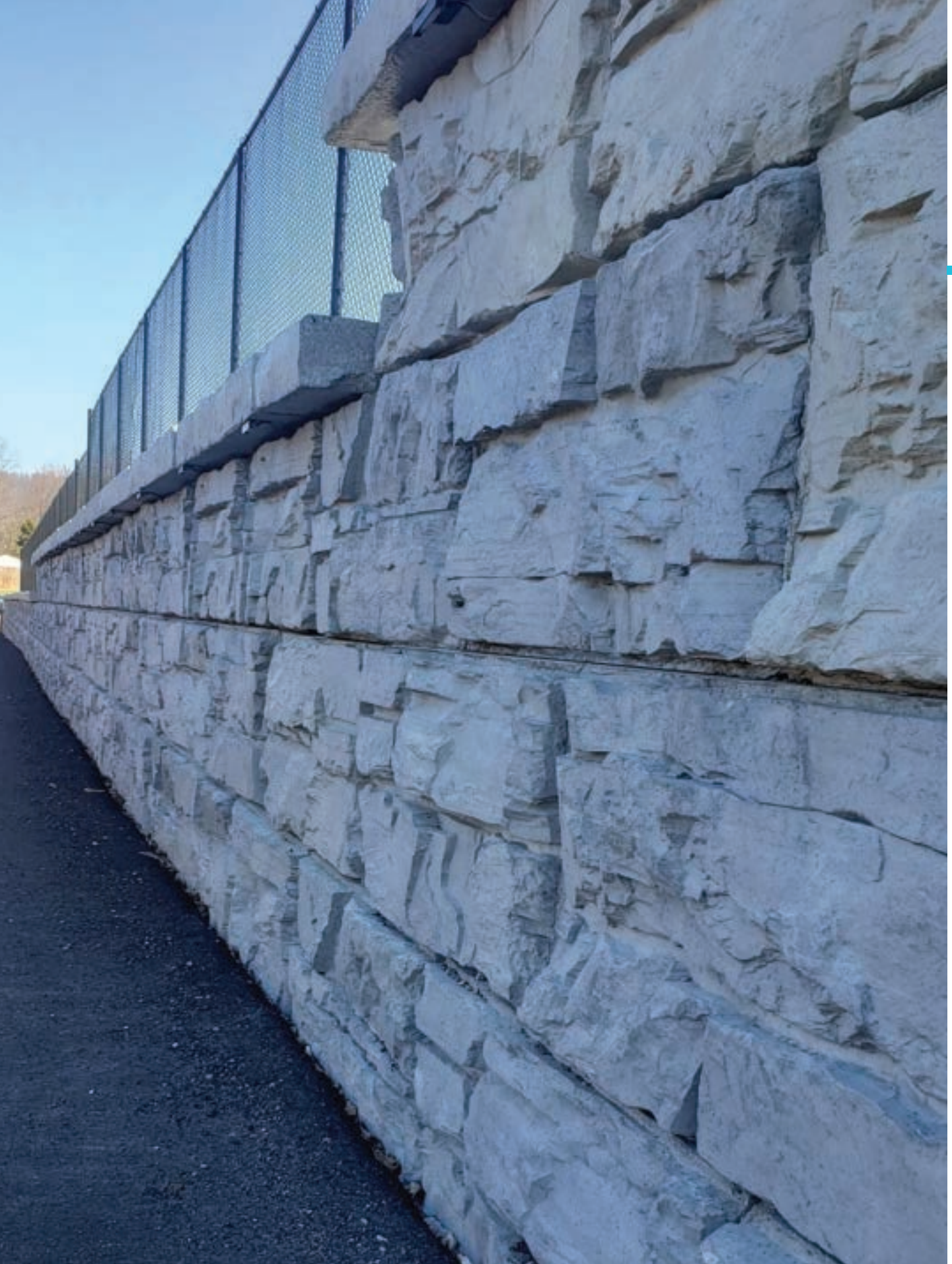
Flagstone Blend



Granite Blend



Storm Blend



● Gray Blend





# MagnumStone®



### Standard Block

48" (face) x 39" (rear) x  
24"D x 24"H



### Base Block

48" (face) x 39" (rear) x 24"D  
x 24"H



### Top Block

48" (face) x 39" (rear) x 24"D  
x 24"H



### Standard Block Half High

48" (face) x 39" (rear) x 24"D  
12" H



### Base Block Half High

48" (face) x 39" (rear) x 24"D  
12"H



### Top Block Half High

48" (face) x 39" (rear) x 24"D  
12"H



### 2 ft. Extender

30" (rear) x 24"D x 24"H



### 4 ft. Extender

30" (rear) x 48"D x 24"H



### Corner/End

2" (top width) x 4" (bottom  
width) x 8" D x 24"H



### Half High Corner End

3" (top width) x 4" (bottom  
width) x 9"D x 12"H



### Cap/Step

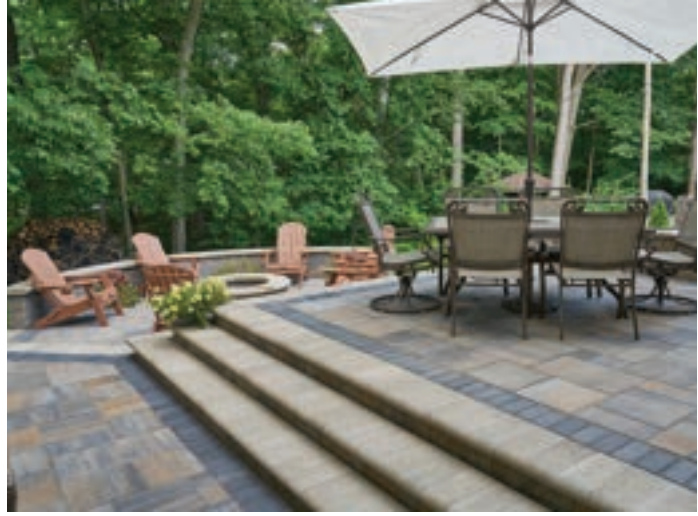
48"W x 24"D x 6"H



Gray Blend

**(Special Order Only - 1 pallet minimum)**









# Attention to Detail

BULLNOSE PAVERS

OLENTANGY BLUFF TREAD™

DIMENSIONAL & IRREGULAR STEPS

SUPERIOR STEPPERS

DIMENSIONAL COPING

COLUMN CAPS / KODAH WALL CAP









# Bullnose Pavers



**Single Bullnose**  
6" x 12" x 2 <sup>3</sup>/<sub>8</sub>"



**Double Bullnose**  
6" x 12" x 2 <sup>3</sup>/<sub>4</sub>"



Charcoal



Cream



Dark Chocolate



Khaki



Silver Mist







# Olentangy Bluff Tread™



**Olentangy Bluff Tread™**  
36" L x 16" D x 6" H



**Olentangy Bluff Tread™**  
48" L x 16" D x 6" H



**Olentangy Bluff Tread™**  
60" L x 16" D x 6" H



**Olentangy Bluff Tread™**  
72" L x 16" D x 6" H



**Cuyahoga Blend**  
**(Special Order Only)**



**Mohican Blend**



**Scioto Blend**



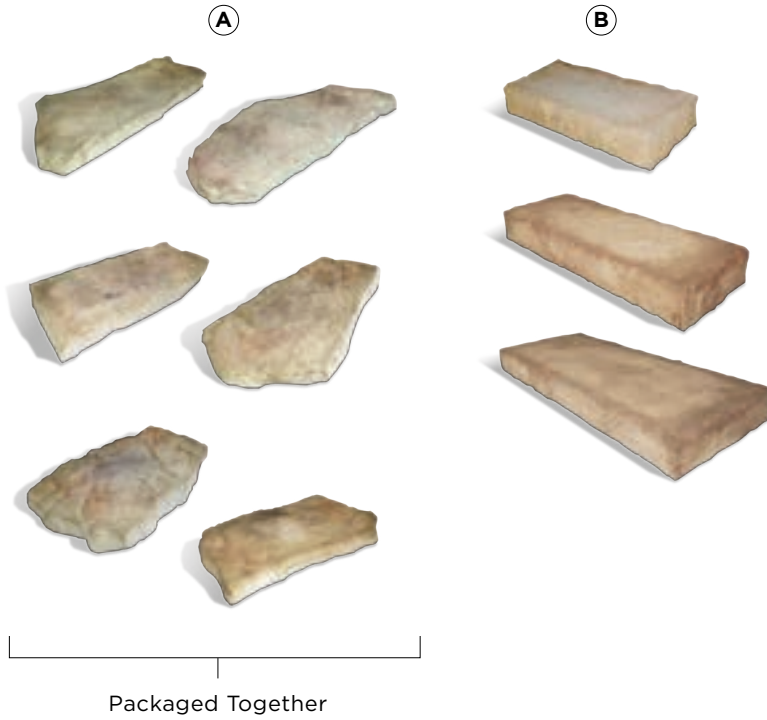


● Dimensional Steps / Scioto Blend





# Dimensional & Irregular Steps\*



**a) Irregular Steps\***

All irregular steps have 7" rise

42" L x 17" D x 7" H

42" L x 26" D x 7" H

54" L x 22" D x 7" H

48" L x 24" D x 7" H

48" L x 28" D x 7" H

60" L x 24" D x 7" H

**b) Dimensional Steps\***

All dimensional steps have 7" rise

36" L x 18" D x 7" H

48" L x 18" D x 7" H

72" L x 30" D x 7" H



Cuyahoga Blend  
(Special Order Only)



Mohican Blend



Scioto Blend







# Superior Steppers



**Superior Stepper** - 21" x 27" x 2"  
Eight different shapes on a cube.



Cuyahoga Blend  
(Special Order Only)



Mohican Blend



Scioto Blend



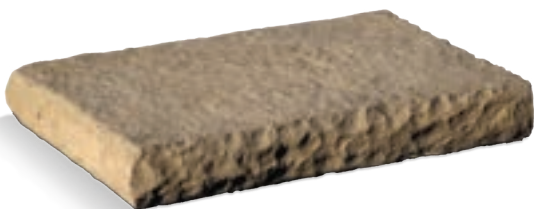


# Dimensional Coping\*



**Standard Coping\***  
18" x 12.5" x 2.5"

Packaged Together



**Finished End Coping\***  
19" x 12.5" x 2.5"



**Long Coping\***  
24" x 12.5" x 2.5"



Cuyahoga Blend  
**(Special Order Only)**



Mohican Blend



Scioto Blend



● 24 x 24 x 3" Precast Cap - Mohican



● 36" x 36" x 3" Kodah Cap Scioto



● 24 x 24 x 2" Precast Cap - Scioto



# Column Caps

## CAP SIZES

24" x 24" x 2"

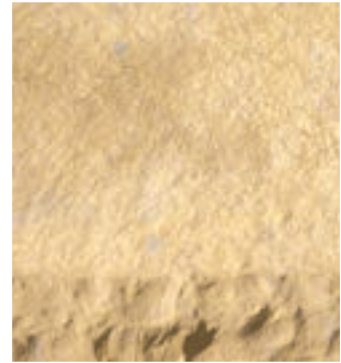
28" x 28" x 2"

24" x 24" x 3"

28" x 28" x 3"

Kodah Cap 36" x 36" x 3"

## PRECAST CAP COLORS



Cuyahoga Blend  
(Special Product Only)



Mohican Blend



Scioto Blend



● 28" x 28" x 2" Precast Cap - Cuyahoga





## The Difference Makers



Dura Denz penetrating sealers are offered in both water based and solvent based formulas. Each formula offers two finishes—a wet look and a matte look. Either finish adds enhancement and protection for years, with minimal maintenance.

### SOLVENT BASED

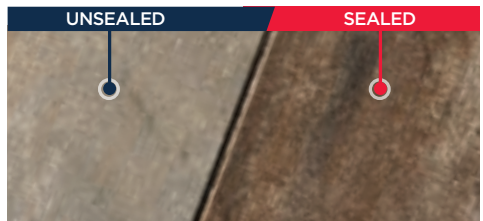
- WET LOOK
- MATTE LOOK

### WATER BASED

- WET LOOK
- MATTE LOOK

UNSEALED

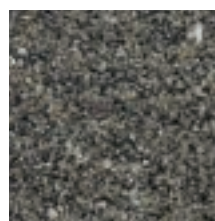
SEALED





## Dura-Denz Polymeric Sand

Dura Denz Polymeric Sand is a joint stabilization sand that offers long lasting durability and superior strength when it comes to your pavement joints. Formulated with a blend of native sands and polymer binders; that once activated, allows the joints to expand and contract with the elements – such as freeze/thaw cycles. Dura Denz Poly Sand prevents sand erosion from pavement joints caused by rain and other water run-off, deters weed growth and insect infestation, and reduces overall pavement maintenance. You can be assured that Dura Denz Polymeric Sand will not discolor the surface or leave behind a haze, when installed correctly. Designed and tested in conjunction with the Americana Collection pavers; the Dura Denz Polymeric Sand, as well as Dura Denz Sealers, promotes a system sell of pavers; built to our specifications, delivering both on quality and consistency.



Granite



Tan

## Best Practices

### We adhere to ICPI System Practices

- After excavation, install geosynthetic fabric
- Install sub-base material (open graded 3/4" clean or dense 3/4" down to fines)
- Install bedding layer (clean limestone chip or dense concrete sand)
- Install Americana Collection paver
- Sweep in Dura Denz Polymeric Sand
- Clean patio in preparation of sealer
- Seal patio with Dura Denz All-In-One Sealer

Dura Denz Polymeric Sand is recommended for joints up to 3/4" (max). For best performance, install with a minimum depth of 1.5"

Available in two color options: Granite and Tan. Customers can expect our Granite to be richer and deeper in color than its counterparts in the market. This was done purposefully, to best compliment our rich gray tones within the Americana Collection.

1 bag = approximately 100 square feet, depending on paver style

## All-In-One Sealers

### How many reasons do you need?

Our new Dura Denz All-In-One penetrating sealers enhance color and texture, stabilizes joint sand, and protect against mold, moss and algae. Formulated to resist UV rays, Dura Denz Sealers help to retain the pavers original color while also repelling water and stains. It can be applied immediately after installation on a clean, dry installation and is rain safe in 90 minutes.

Dura Denz Sealers are formulated to give maximum coverage for years. Although formulated in conjunction with the Americana Collection pavers, Dura-Denz Sealers may also be applied to any type of concrete paver, clay paver, flat and stamped concrete, and masonry surfaces such as concrete walls, exposed aggregate and retaining walls. When sealing, it is always best to test in an inconspicuous location prior to full application.

**Make sure you ask your contractor about this very important last step to a professional grade finish. By committing to an easy maintenance plan, you can keep stains from penetrating your hardscape surface and make a world of difference to the look and longevity of your paver project!**

# Fire Pits



● Custom Kodah Fire Pit



● Edington Fire Pit



● Custom Belvedere Fire Pit



● Lenza Fire Pit



● Belvedere Fire Pit



● Dimensional Wall Fire Pit





# Edington® Fire Pit



**Optional  
Precast Caps**

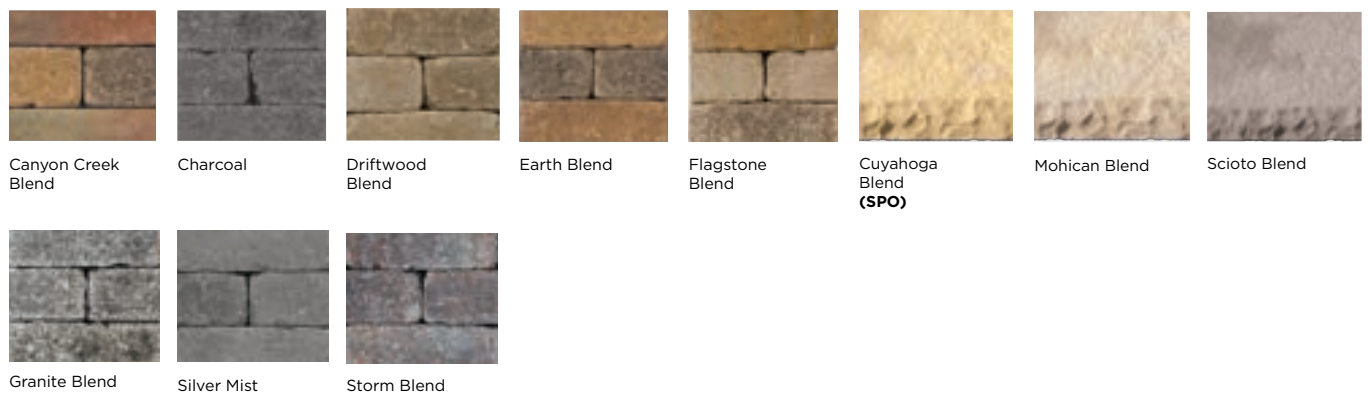
**Overall Dimensions:** 12" H x 48" Diameter  
32" Inside Diameter

- 39 Edington Wall Stone Wedge Units
- 3 - 10 oz. Tubes of Adhesive
- Steel Ring
- Optional Precast Rockface Caps

**Components Sold Separately**

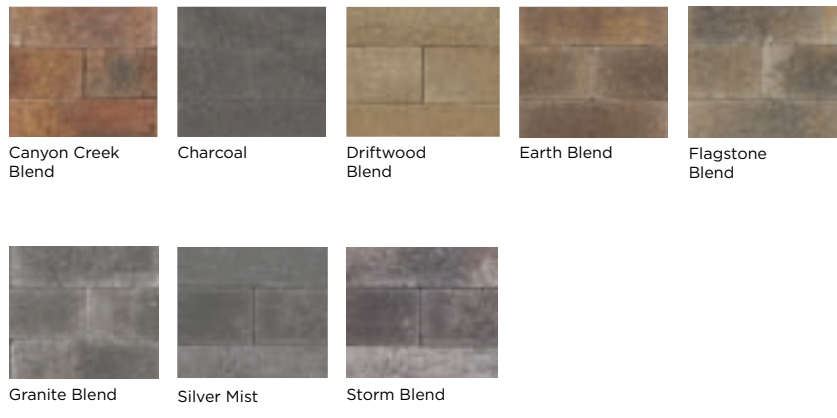
**EDINGTON® COLORS**

**TUMBLLED**



**PRECAST CAP COLORS**

**NON-TUMBLLED**



Due to variations in printing, color selections should always be chosen from actual product samples.



\* Not Available in Michigan.



# Dimensional Fire Pit\*

**Overall Dimensions:** 12" H x 44" W x 44" D

## COMPONENTS

---

- 36 Dimensional Units
- 3 - 10 oz. Tubes of Adhesive
- Steel Liner

### Components Sold Separately



\* Not Available in Michigan.



Cuyahoga Blend  
**(SPO)**



Mohican Blend



Scioto Blend







# Kodah<sup>®</sup> Fire Pit\*

Overall Dimensions: 12" H x 48" Diameter

## COMPONENTS

- 16 Kodah Wall Corner Units
- 3 - 10 oz. Tubes of Adhesive
- Steel Liner

### Components Sold Separately



\* Not Available in Michigan.



Cuyahoga Blend  
(SPO)



Mohican Blend



Scioto Blend



# Belvedere<sup>®</sup> Fire Pit\*

**Overall Dimensions:** 14" H x 58" Diameter

## COMPONENTS

---

- 52 Belvedere Units
- 3 - 10 oz. Tubes of Adhesive
- Steel Ring

### Components Sold Separately



\* Not Available in Michigan.



Cuyahoga Blend  
(SPO)



Mohican Blend



Scioto Blend





# Edington® Pub Table

**Overall Dimensions:** 42" H x 48" W x 48" D

## TUMBLLED



Canyon Creek Blend



Charcoal



Driftwood Blend



Earth Blend



Flagstone Blend



Granite Blend



Silver Mist



Storm Blend

## NON-TUMBLLED



Canyon Creek Blend



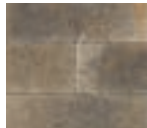
Charcoal



Driftwood Blend



Earth Blend



Flagstone Blend



Granite Blend



Silver Mist



Storm Blend

## COMPONENTS

- 36 Edington Wall Stone pieces - stocked kit colors below
- 1-42" Table Top with 2" hole
- 1-28" Foot Rest with 2" hole - Both pieces 3" thick  
- The 2" hole fits standard umbrella (not included)
- 2-10 oz. Tubes of Adhesive
- Optional 42" Round Table Top with 2" hole (non stock)

**Components Sold Separately**

## PRECAST CAP COLORS



Cuyahoga Blend  
**(SPO)**



Mohican Blend



Scioto Blend



# Enjoy the outdoors under the shade

## PAVILIONS

Pavilions can be an extension of your home, or a freestanding structure providing shade and visual interest to your yard.

## PERGOLAS

If you want to immerse yourself in the outdoors, but enjoy some sun protection, pergolas are a perfect fit.



Mesa Structure



Vineyard Structure



Prairie Structure



Wellington Structure

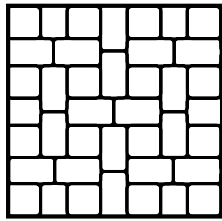


Breckenridge Pavilion

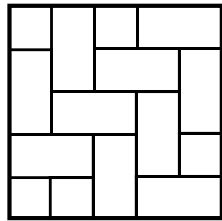


# Paver Patterns

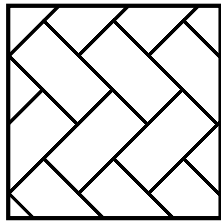
## LEXINGTON



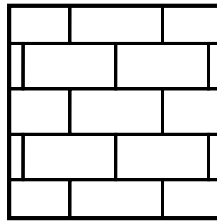
Muster K



90° Herringbone  
(Lexington 21 only)

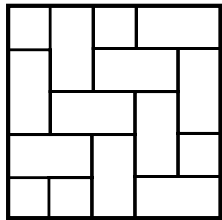


45° Herringbone  
(Lexington 21 only)

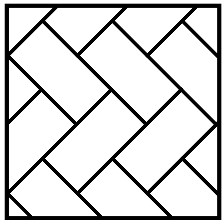


Running Bond  
(Lexington 21 only)

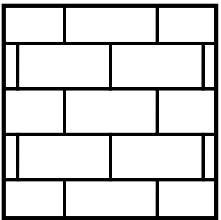
## CITYSTONE XL



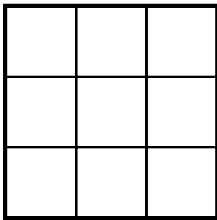
90° Herringbone  
12x24



45° Herringbone  
12x24

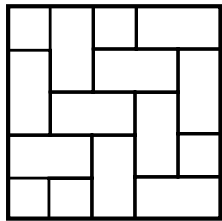


Running Bond  
12x24, 24x24

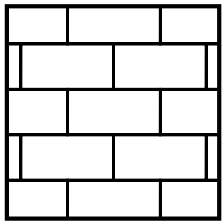


Stack Bond  
24x24

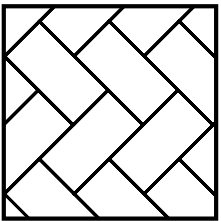
## PLYMOUTH



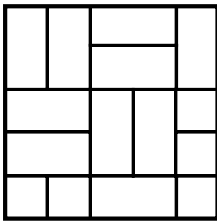
90° Herringbone



Running Bond

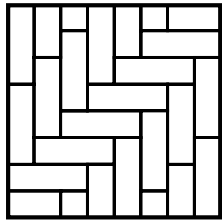


45° Herringbone

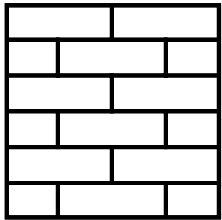


Basketweave

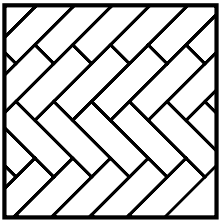
## JAMESTOWN



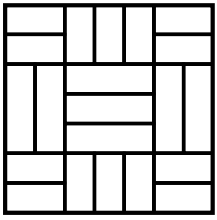
90° Herringbone



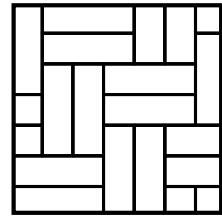
Running Bond



45° Herringbone

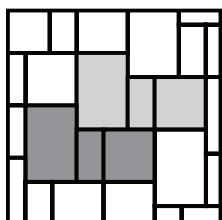


Pattern A

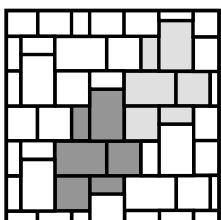


Pattern B

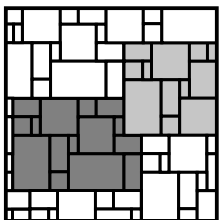
## OZARK & MANHATTAN DEMI & SUPRA



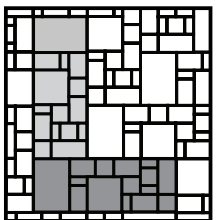
Demi or Supra  
Pattern 1



Demi or Supra  
Pattern 2

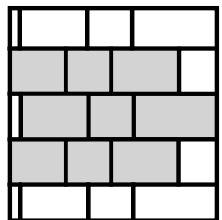


Demi/Supra  
Pattern 1  
Demi (30%), Supra (70%)

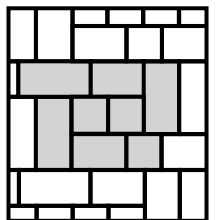


Demi/Supra  
Pattern 2  
Demi (50%), Supra (50%)

## NEWPORT



Random  
Running Bond



Pattern B

# Packaging Reference Guide

## PAVERS

### STOCKED

### NOMINAL DIMENSIONS

### DIMENSIONS

### WEIGHT /SQ. FT

### UNITS/ SQ. FT.

AMERICANA COLLECTION®

		STOCKED	NOMINAL DIMENSIONS	DIMENSIONS	WEIGHT /SQ. FT	UNITS/ SQ. FT.
Lexington® Combo Pallet	PKG. LAYER	X	5 1/2" x 5 1/2" x 2 3/8" & 5 1/2" x 8 1/4" x 2 3/8"	140 mm x 140 mm x 60 mm	29	4.76/3.17
Lexington® 21		X	5 1/2" x 8 1/4" x 2 3/8"	140 mm x 210 mm x 60 mm	29	3.17
Ozark® Demi Small Rectangle	PACKAGED LAYER	X	4" x 8" x 2 3/8"	102 mm x 204 mm x 60 mm	29	4.5
Ozark® Demi Square		X	8" x 8" x 2 3/8"	204 mm x 204 mm x 60 mm	29	2.25
Ozark® Demi Large Rectangle		X	8" x 12" x 2 3/8"	204 mm x 305 mm x 60 mm	29	1.5
Ozark® Supra Small Rectangle	PACKAGED LAYER	X	8" x 16" x 2 3/8"	204 mm x 406 mm x 60 mm	29	1.12
Ozark® Supra Square		X	16" x 16" x 2 3/8"	406 mm x 406 mm x 60 mm	29	0.56
Ozark® Supra Large Rectangle		X	16" x 24" x 2 3/8"	406 mm x 610 mm x 60 mm	29	0.375
Manhattan® Demi Small Rectangle	PACKAGED LAYER	X	4" x 8" x 2 3/8"	102 mm x 204 mm x 60 mm	29	4.5
Manhattan® Demi Square		X	8" x 8" x 2 3/8"	204 mm x 204 mm x 60 mm	29	2.25
Manhattan® Demi Large Rectangle		X	8" x 12" x 2 3/8"	204 mm x 305 mm x 60 mm	29	1.5
Manhattan® Supra Small Rectangle	PACKAGED LAYER	X	8" x 16" x 2 3/8"	204 mm x 406 mm x 60 mm	29	1.12
Manhattan® Supra Square		X	16" x 16" x 2 3/8"	406 mm x 406 mm x 60 mm	29	0.56
Manhattan® Supra Large Rectangle		X	16" x 24" x 2 3/8"	406 mm x 610 mm x 60 mm	29	0.375
Newport® Small Rectangle		X	11 3/4" x 17 3/4" x 2 3/8"	298 mm x 298 mm x 60 mm	29	0.69
Newport® Square		X	11 3/4" x 11 3/4" x 2 3/8"	298 mm x 450 mm x 60 mm	29	1.04
Newport® Large Rectangle		X	11 3/4" x 23 5/8" x 2 3/8"	298 mm x 600 mm x 60 mm	29	0.52
CityStone™ XL		X	12" x 24" x 2 1/2"	305 mm x 610 mm x 64 mm	29	0.50
CityStone™ XL		X	24" x 24" x 2 1/2"	610 mm x 610 mm x 64 mm	29	0.25
Plymouth®		X	4" x 8" x 2 3/8"	102 mm x 204 mm x 60 mm	29	4.7
Jamestown®		X	2 5/8" x 7 7/8" x 2 3/8"	67 mm x 200 mm x 60 mm	29	7.14
Luna		X	4 1/3" x 6" x 2 1/2"	110 mm x 152 mm x 64 mm	25	5.52
Grand Flagstone <sup>¥</sup>			15 unique shapes at 1 3/4" thickness	N/A	20.5	N/A
Dimensional Flagstone <sup>¥</sup>			Comprised of six sizes, per cube	N/A	24	N/A
Single Bullnose Paver		X	6" x 12" x 2 3/8"	152 mm x 305 mm x 60 mm	28	N/A
Double Bullnose Paver		X	6" x 12" x 2 3/4"	152 mm x 305 mm x 70 mm	30	N/A
Superior Steppers		X	21" x 27" x 2" (Dimensions vary slightly by paver)	533 mm x 686 mm x 51 mm	N/A	N/A

#### SPECIAL NOTES:

¥ Not available in Michigan

Weight per Cube does not include pallet weight.



UNITS/ LAYER	LAYERS/ CUBE	UNITS/ CUBE	WEIGHT/ CUBE	SQ. FT./ UNIT	SQ. FT./ LAYER	SQ. FT/ CUBE	COLOR STOCKED
36	10	360	2934	.32/.21	10.12	101.20	Canyon Creek, Driftwood, Earth, Flagstone, Granite, Storm
42	8	336	3074	0.32	13.25	106	Charcoal, Driftwood, Storm
8	10	80	2884	0.22	1.76	103.3	Canyon Creek, Driftwood, Earth, Flagstone, Granite, Storm
8	10	80	2884	0.44	3.52	103.3	Canyon Creek, Driftwood, Earth, Flagstone, Granite, Storm
8	10	80	2884	0.66	5.28	103.3	Canyon Creek, Driftwood, Earth, Flagstone, Granite, Storm
2	10	20	2884	0.89	1.78	103.34	Driftwood, Earth, Flagstone, Granite, Storm
2	10	20	2884	1.77	3.54	103.34	Driftwood, Earth, Flagstone, Granite, Storm
2	10	20	2884	2.67	5.34	103.34	Driftwood, Earth, Flagstone, Granite, Storm
8	10	80	2884	0.22	1.76	103.3	Driftwood, Earth, Flagstone, Frost, Granite, Storm
8	10	80	2884	0.44	3.52	103.3	Driftwood, Earth, Flagstone, Frost, Granite, Storm
8	10	80	2884	0.66	5.28	103.3	Driftwood, Earth, Flagstone, Frost, Granite, Storm
2	10	20	2884	0.89	1.78	103.34	Driftwood, Earth, Flagstone, Frost, Granite, Storm
2	10	20	2884	1.77	3.54	103.34	Driftwood, Earth, Flagstone, Frost, Granite, Storm
2	10	20	2884	2.67	5.34	103.34	Driftwood, Earth, Flagstone, Frost, Granite, Storm
2	9	18	3020	1.45	2.90	104	Driftwood, Granite, Storm
3	9	27	3020	0.96	2.88	104	Driftwood, Granite, Storm
3	9	27	3020	1.93	5.79	104	Driftwood, Granite, Storm
N/A	10	60	3255	2.00	N/A	120	Driftwood, Frost, Silver Mist, Storm
N/A	10	20	2240	4.00	N/A	80	Driftwood, Frost, Silver Mist, Storm
54	9	486	2999	0.21	11.48	103	Charcoal, Cream, Dark Chocolate, Khaki, Silver Mist
78	5	390	1583	10.92	10.92	55	Charcoal, Cream, Salt & Pepper, Silver Mist
64	10	640	2872	N/A	11.6	116	Charcoal, Frost
N/A	8	32	2160	N/A	11.00	88	Special Order Only
N/A	8	48	2350	N/A	12.25	98	Special Order Only
2	3	168	2352	N/A	N/A	84	Charcoal, Cream, Dark Chocolate, Khaki, Silver Mist
2	3	144	2160	N/A	N/A	72	Charcoal, Cream, Dark Chocolate, Khaki, Silver Mist
N/A	6	24	1950	N/A	N/A	N/A	Mohican, Scioto

PAVER COLOR BLENDS:

**Canyon Creek** = buff, charcoal, maroon  
**Driftwood** = cream, desert sand, gray  
**Earth** = brown, buff, charcoal  
**Flagstone** = buff, charcoal, gray  
**Granite** = charcoal, gray  
**Storm** = brown, light grey, black

Due to color variations, it's imperative to pull/install from multiple cubes at a time.

# Retaining Wall Packaging Reference Guide

RETAINING WALL PRODUCTS	STOCKED	NOMINAL DIMENSIONS	DIMENSIONS	WEIGHT/ SQ. FT
Edington Wall Stone*	X	12" front x 8" depth x 4" height	305 mm x 204 mm x 102 mm	90
Edington Wall Wedge	X	12" front x 8" depth x 4" height	305 mm x 204 mm x 102 mm	75
Non-Tumbled Edington Wall Stone*	X	12" front x 8" depth x 4" height	305 mm x 204 mm x 102 mm	90
Non-Tumbled Edington Wall Stone Wedge*	X	12" front x 8" depth x 4" height	305 mm x 204 mm x 102 mm	75
Lenza Wall	X	18" front x 9" depth x 5" height	457 mm x 229 mm x 127 mm	86
Lenza Wall Cap	X	18.5" front x 10" depth x 2.5" height	470 mm x 254 mm x 64 mm	11.52
Belvedere Wall‡	X	Random sizes available	Varies in size	91.667
Belvedere Corner‡	X	Random sizes available	Varies in size	63.33
Belvedere Coping‡	X	Random sizes available	Varies in size	N/A
Dimensional Wall‡	X	Random sizes available	Varies in size	84
Dimensional Wedge‡	X	Random sizes available	Varies in size	N/A
Kodah Wall‡	X	Random Sizes Available	Varies in size	N/A
Kodah Wall Corner‡	X	21" front x 10.5" depth x 6" height	533 mm x 267 mm x 152 mm	N/A
Outcropping‡	X	Wall, corner (6" & 12") available	Varies in size	222.22
Non-Weathered Versa-Lok® Standard'	X	16" front x 12" depth x 6" height	406 mm x 305 mm x 152 mm	123
Non-Weathered Versa-Lok® Smooth Top	X	16" front x 12" depth x 6" height	406 mm x 305 mm x 152 mm	123
Non-Weathered Rectangular Retaining Wall Cap'	X	16" front x 11 <sup>5</sup> / <sub>8</sub> " depth x 3 <sup>5</sup> / <sub>8</sub> " height	406 mm x 295 mm x 92 mm	51
Non-Weathered Versa-Lok® Solid Corner'	X	7 <sup>7</sup> / <sub>8</sub> " front x 12" depth x 6" height	203 mm x 305 mm x 152 mm	41
Non-Weathered Versa-Lok® Full Return Corner'	X	8" front x 16" depth x 6" height	204 mm x 406 mm x 152 mm	48
Weathered Versa-Lok® Standard		16" front x 12" depth x 6" height	406 mm x 305 mm x 152 mm	123
Weathered Rectangular Retaining Wall Cap		16" front x 11 <sup>5</sup> / <sub>8</sub> " depth x 3 <sup>5</sup> / <sub>8</sub> " height	406 mm x 295 mm x 92 mm	51
Weathered Versa-Lok® Solid Corner'		7 <sup>7</sup> / <sub>8</sub> " front x 12" depth x 6" height	203 mm x 305 mm x 152 mm	41
Weathered Versa-Lok® Full Return Corner'		8" front x 16" depth x 6" height	204 mm x 406 mm x 152 mm	48
RegalStone Pro® Straight	X	18" front x 12" depth x 8" height	457 mm front x 305 mm x 204 mm	76
Reversible Corner	X	18" front x 8" depth x 8" height	457 mm front x 204 mm x 204 mm	65
Rectangular Cap	X	18" front x 12" depth x 4" height	457 mm front x 305 mm x 102 mm	67
Magnumstone® Standard Block		48" (face) x 39" (rear) x 24"D x 24"H		
Magnumstone® Base Block		48" (face) x 39" (rear) x 24"D x 24"H		
Magnumstone® Top Block		48" (face) x 39" (rear) x 24"D x 24"H		
Magnumstone® Standard Block Half High		48" (face) x 39" (rear) x 24"D x 12" H		
Magnumstone® Base Block Half High		48" (face) x 39" (rear) x 24"D x 12"H		
Magnumstone® Top Block Half High		48" (face) x 39" (rear) x 24"D x 12"H		
Magnumstone® 2 ft. Extender		30" (rear) x 24"D x 24"H		
Magnumstone® 4 ft. Extender		30" (rear) x 48"D x 24"H		
Magnumstone® Corner/End		2" (top width) x 4" (bottom width) x 8" D x 24"H		
Magnumstone® Half High Corner End		3" (top width) x 4" (bottom width) x 9"D x 12"H		
Magnumstone® Cap		48"W x 24"D x 6"H		

SPECIAL NOTES:

- \* Asterisk denotes non-stocked shape or color
- ‡ Not available in Michigan
- † Also available in Weathered



UNITS/ SQ. FT.	UNITS/ BAND	UNITS/ CUBE	WEIGHT/ CUBE	SQ. FT./ UNIT	SQ. FT./ LAYER	SQ. FT./ CUBE	COLOR STOCKED
3.00	N/A	100	2900	0.333	N/A	33	Canyon Creek, Charcoal, Driftwood, Earth, Flagstone, Granite, Storm, Silver Mist
3.00	N/A	90	2160	0.333	N/A	30	Canyon Creek, Charcoal, Driftwood, Earth, Flagstone, Granite, Storm, Silver Mist
3.00	N/A	132	3960	0.333	N/A	44	Canyon Creek, Charcoal, Driftwood, Earth, Flagstone, Granite, Storm, Silver Mist
3.00	N/A	90	2250	0.333	N/A	30	Canyon Creek, Charcoal, Driftwood, Earth, Flagstone, Granite, Storm, Silver Mist
1.60	10	50	2666	0.62	6.20	31	Driftwood, Granite, Storm
3.13	8	64	2304	0.32	2.56	20.48	Driftwood, Granite, Storm
N/A	N/A	N/A	2475	N/A	N/A	27	Mohican, Scioto
N/A	N/A	N/A	1520	N/A	N/A	24	Mohican, Scioto
N/A	N/A	N/A	1550	N/A	N/A	66.00/LNFT	Mohican, Scioto
3.00	N/A	75	2100	N/A	N/A	25	Mohican, Scioto
3.00	N/A	100	2000	N/A	N/A	N/A	Mohican, Scioto
N/A	N/A	18	2394	N/A	N/A	21	Mohican, Scioto
N/A	N/A	16	1600	N/A	N/A	21	Mohican, Scioto
N/A	N/A	N/A	4000	N/A	N/A	18	Mohican, Scioto
1.50	N/A	32	2624	0.667	N/A	21.33	Canyon Creek, Chestnut, Desert Sand, Earth, Flagstone, Granite, Storm
1.50	N/A	32	2624	0.667	N/A	21.33	Canyon Creek, Chestnut, Desert Sand, Earth, Flagstone, Granite, Storm
N/A	N/A	48	2448	N/A	N/A	N/A	Canyon Creek, Chestnut, Desert Sand, Earth, Flagstone, Granite, Storm
3.00	N/A	64	2624	N/A	N/A	N/A	Canyon Creek, Chestnut, Desert Sand, Earth, Flagstone, Granite, Storm
N/A	N/A	48	2304	N/A	N/A	N/A	Canyon Creek, Chestnut, Desert Sand, Earth, Flagstone, Granite, Storm
1.50	N/A	32	2624	0.667	N/A	21.33	Special Order Only
N/A	N/A	48	2448	N/A	N/A	N/A	Special Order Only
3.00	N/A	64	2624	N/A	N/A	N/A	Special Order Only
N/A	N/A	48	2304	N/A	N/A	32	Special Order Only
1.00	8	32	3040	1.000	N/A	320	Flagstone, Granite, Storm
N/A	N/A	40	2600	N/A	N/A	40	Flagstone, Granite, Storm
N/A	N/A	48	3216	N/A	N/A	24	Flagstone, Granite, Storm
		2	2690				Special Order Only
		2	2650				Special Order Only
		2	2440				Special Order Only
		2	1500				Special Order Only
		2	1450				Special Order Only
		2	1374				Special Order Only
		2	1150				Special Order Only
		2	1750				Special Order Only
		2	680				Special Order Only
		4	680				Special Order Only
		6	3360				Special Order Only

RETAINING WALL  
COLOR BLENDS:

**Canyon Creek** = buff, charcoal, maroon  
**Chestnut** = buff, brown  
**Cuyahoga** = golden buff, charcoal accent  
**Driftwood** = cream, desert sand, gray

**Earth** = brown, buff, charcoal  
**Flagstone** = buff, charcoal, gray  
**Granite** = charcoal, gray  
**Mohican** = neutral tan, brown accent

**Scioto** = gray, charcoal accent  
**Storm** = brown, light gray, black

# Stair Treads & Wall Copings

## Packaging Reference Guide

### STAIR TREADS

	STOCKED	NOMINAL DIMENSIONS	DIMENSIONS	WEIGHT/ SQ. FT	UNITS/ SQ. FT.
Olentangy Bluff Tread™ 36"	X	36" front x 16" depth x 6" height	914 mm x 406 mm x 152 mm	N/A	N/A
Olentangy Bluff Tread™ 48" (Front width can vary up to 1.5")	X	48 1/2" front x 16" depth x 6" height	1232 mm x 406 mm x 152 mm	N/A	N/A
Olentangy Bluff Tread™ 60"	X	60" front x 16" depth x 6" height	1524 mm x 406 mm x 152 mm	N/A	N/A
Olentangy Bluff Tread™ 72"	X	72" front x 16" depth x 6" height	1829 mm x 406 mm x 152 mm	N/A	N/A
Irregular Steps‡	X	42"- 60" front x 17"-28" depth x 7" height	Varies in size, Sold as Full Pallet Only	N/A	N/A
Dimensional Steps 3'‡	X	36" front x 18" depth x 7" height	914 mm x 457 mm x 178 mm	N/A	N/A
Dimensional Steps 4'‡	X	48" front x 18" depth x 7" height	1219 mm x 457 mm x 178 mm	N/A	N/A
Dimensional Steps 6'‡	X	72" front x 30" depth x 7" height	1829 mm x 762 mm x 178 mm	N/A	N/A

### COPINGS

	STOCKED	NOMINAL DIMENSIONS	DIMENSIONS	WEIGHT/ SQ. FT
Dimensional Coping – Standard	X	18" front x 12.5" depth x 2.5" height	Varies in Size	N/A
Dimensional Coping – Finished End	X	19" front x 12.5" depth x 2.5" height	Varies in Size	N/A
Dimensional Coping – Long	X	24" front x 12.5" depth x 2.5" height	Varies in Size	N/A

### COLUMN CAPS

	STOCKED	NOMINAL DIMENSIONS	DIMENSIONS	WEIGHT / EACH
Rockface Cap Sizes	X	24" front x 24" depth x 2" height	Varies in Size	90
Rockface Cap Sizes	X	28" front x 28" depth x 2" height	Varies in Size	105
Rockface Cap Sizes	X	24" front x 24" depth x 3" height	Varies in Size	140
Rockface Cap Sizes	X	28" front x 28" depth x 3" height	Varies in Size	180
Kodah Cap ‡	X	36" front x 36" depth x 3" height	Varies in Size	315

SPECIAL NOTES:

\* Asterisk denotes non-stocked shape or color

‡ Not available in Michigan

† Also available in Weathered

Weight per Cube does not include pallet weight.



UNITS/ BAND	UNITS/ CUBE	WEIGHT/ CUBE	SQ. FT./ UNIT	SQ. FT./ LAYER	SQ. FT./ CUBE	COLOR STOCKED
N/A	8	2240	N/A	N/A	N/A	Mohican, Scioto
N/A	8	2984	N/A	N/A	N/A	Mohican, Scioto
N/A	6	2808	N/A	N/A	N/A	Mohican, Scioto
N/A	4	2240	N/A	N/A	N/A	Mohican, Scioto
N/A	6	2962	N/A	N/A	N/A	Mohican, Scioto
N/A	6	2250	N/A	N/A	N/A	Mohican, Scioto
N/A	6	2730	N/A	N/A	N/A	Mohican, Scioto
N/A	3	3960	N/A	N/A	N/A	Mohican, Scioto

UNITS/ SQ. FT.	UNITS/ BUNDLE	LAYERS/ CUBE	WEIGHT/ CUBE	SQ. FT./ UNIT	SQ. FT./ LAYER	SQ. FT./ CUBE	COLOR STOCKED
N/A	12	N/A	1950	N/A	N/A	63.00/LNFT	Mohican, Scioto
N/A	6	N/A	1950	N/A	N/A	63.00/LNFT	Mohican, Scioto
N/A	18	N/A	1950	N/A	N/A	63.00/LNFT	Mohican, Scioto

UNITS/ SQ. FT.	UNITS/ BUNDLE	LAYERS/ CUBE	WEIGHT/ CUBE	SQ. FT./ UNIT	SQ. FT./ LAYER	SQ. FT./ CUBE	COLOR STOCKED
N/A	12	N/A	1080	N/A	N/A	N/A	Mohican, Scioto
N/A	6	N/A	630	N/A	N/A	N/A	Mohican, Scioto
N/A	12	N/A	1680	N/A	N/A	N/A	Mohican, Scioto
N/A	6	N/A	1080	N/A	N/A	N/A	Mohican, Scioto
N/A	5	N/A	1575	N/A	N/A	N/A	Mohican, Scioto

TREADS / COPING  
COLOR BLENDS:

**Cuyahoga** = golden buff, charcoal accent  
**Mohican** = neutral tan, brown accent  
**Scioto** = gray, charcoal accent





The  
COURTYARDS of



A stone retaining wall made of stacked, light-colored rectangular stones. The wall is topped with a row of green shrubs and small white flowers. Below the wall, there are more green shrubs and a dark mulch bed. In the background, a grassy hill rises, topped with a wooden fence and several houses with dark roofs and white trim. The sky is blue with scattered white clouds.

**RIVERSIDE**  
an EPCON COMMUNITY







## LIMITED WARRANTY for the Homeowner Purchaser

Oberfields, LLC ("Oberfields"), having its headquarters located at Five Concourse Parkway, Atlanta, GA 30328, warrants its products to be of merchantable quality if installed in accordance with applicable ICPI ([www.icpi.org](http://www.icpi.org)) or NCMA ([www.ncma.org](http://www.ncma.org)) standards. The product is not warranted as suitable for any use or purpose other than for residential application and the purpose for which the product is generally intended. This warranty does not cover standard manufacturing variations, color variations/matching or efflorescence. Oberfields is not responsible for installation of the product or defective conditions caused by installation, abuse, impact, abrasion or alteration of the product, earth-shifts, excessive or unforeseen site conditions, acts of God or application of de-icing salt or other chemicals to the product. Liability under this warranty, if the product is found to be defective, is **LIMITED** to the replacement of the defective product, or at Oberfields's option, the refund of the purchase price of the defective product. Oberfields does not guarantee that the shape or color will be available in the future and will provide an alternate shape or color from its current product line as determined by Oberfields at the time of an accepted warranty claim. This warranty is valid for the lifetime of the product. This warranty is transferable. In the event of a claim under this warranty, notice must be given to Oberfields, together with original proof of purchase, at its headquarters by sending a letter to: Oberfields a/s Warranties, Five Concourse Parkway, Atlanta, GA 30328. THIS WARRANTY IS ISSUED AND ACCEPTED IN LIEU OF ANY AND ALL OTHER EXPRESS WARRANTIES AND EXPRESSLY EXCLUDES LIABILITY FOR LABOR, FREIGHT AND OTHER COSTS ASSOCIATED WITH REMOVAL AND REPLACEMENT OF THE DEFECTIVE PRODUCT AND FOR INDIRECT AND CONSEQUENTIAL DAMAGES.

- Prior to installation, please inspect product style & color to ensure they are as ordered.
- Check product color prior to installation for product consistency.
- All pavers should be inspected prior to installation for chipping or cracks. Set aside for cutting.
- When installing, pull from multiple pallets for optimum color blending.
- Oberfields pavers require a buffer between the plate compactor & the paver surface to prevent scuffing.
- Installation denotes acceptance of material.
- Oberfields recommends that a qualified and licensed (in states where it is required) contractor install this product.  
The quality of the installation is the sole responsibility of the installer.

Please refer to installation guidelines set forth by the Concrete Masonry & Hardscapes Association (CMHA) at [masonryandhardscapes.org](http://masonryandhardscapes.org).

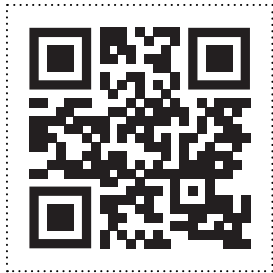
## SALES & MANUFACTURING

---

Hardscape & Precast  
528 London Road  
Delaware, Ohio 43015  
614-252-0955  
740-369-7644  
800-845-7644  
Fax 740-363-7644

---

Hardscape  
4033 Alum Creek Drive  
Obetz, Ohio 43207  
614-252-0955



[oberfields.com](https://www.oberfields.com)

800-845-7644

FOLLOW US

